



CyClean™ Launch Pack

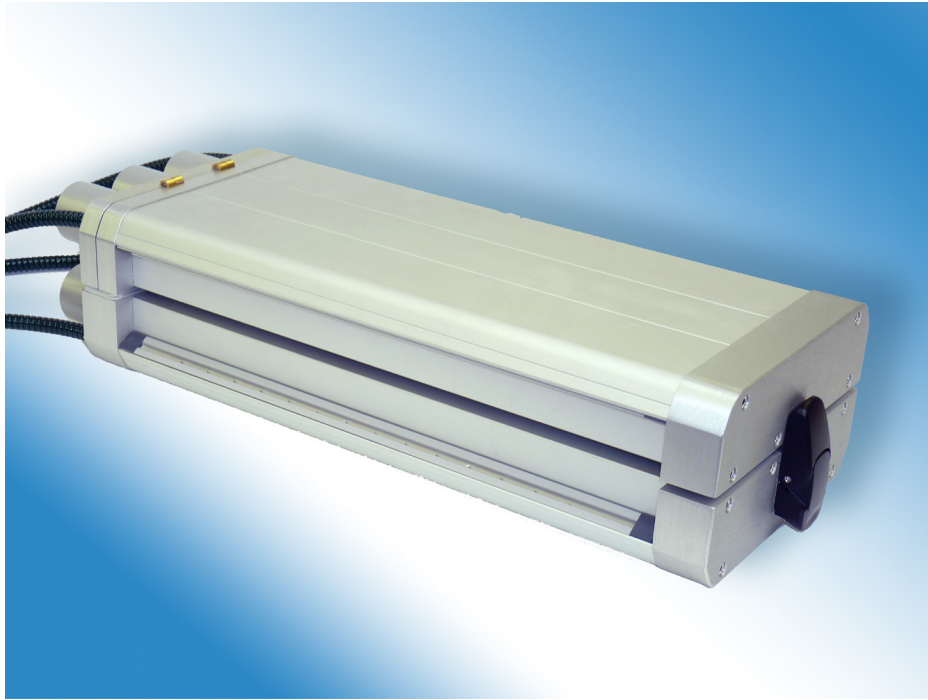
CyClean™

Non-Contact Web Cleaning

Contents

Product Profile	3
Background	3
Meech Technologies	4
How CyClean Works	5
Features and Benefits	5
Technical Characteristics	5
Standard CyClean Sizes	6
Non-Standard CyClean Sizes	6
Standard CyClean Scope of Supply	6
Sales Opportunities	7
Coating Lines	7
Slitter Rewinders	7
Narrow Web	7
Companies that were interested in ShearClean	7
Pricing Position	7
Competition	8
Useful Documents	8
Availability	8

Products shown in this document may be covered by one or more patents, patents applied for and/or registered designs and/or trade marks. For further information please refer to our Head Office or visit www.meech.com.



Product Profile

CyClean™ is a non-contact web cleaning system that is suitable for web widths up to 2,000mm (78.74").

CyClean is only available as a double sided cleaning system (single sided is not available) and gives excellent removal of dry, unbonded contamination from the web surface. Particle removal to 0.5 micron is achievable.

CyClean can be used in a wide variety of applications and, being non-contact, it can be used with all web materials.

A CyClean system includes the Meech Air Handling Unit (AHU) which incorporates the filtration for the system and provides the vacuum pressure and blowing pressure airflows.


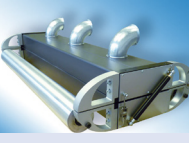
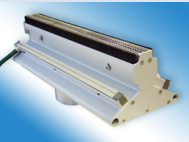

Background

The addition of CyClean to the Meech web cleaning range, places Meech in a unique position; Meech is the only manufacturer to have 4 web cleaning systems that are each based on a different cleaning technology.

Meech can now truly specify the most suitable system for each customer and application, no other competitor can do this.

Meech Technologies

Meech has 2 non-contact and 2 contact web cleaning systems, as summarised below.

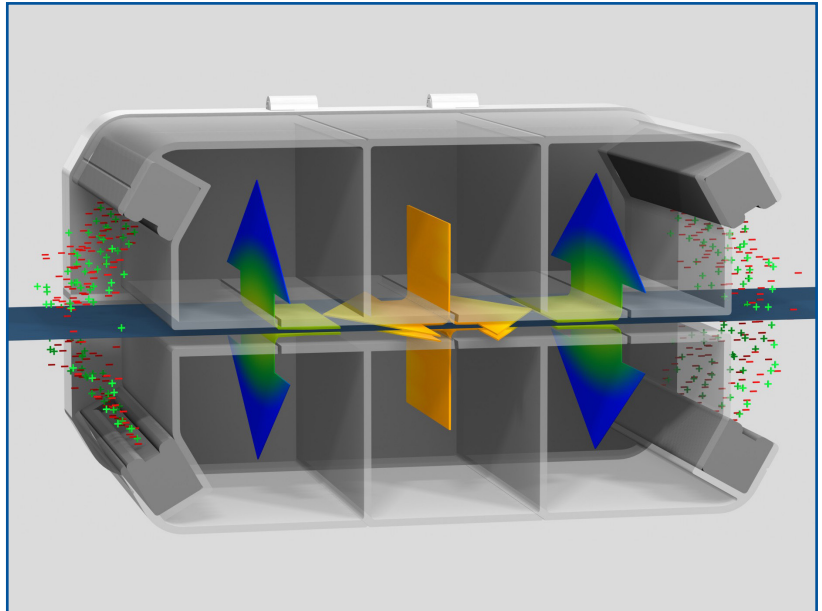
	Cleaning Technology	Contact	Non Contact	Removes Particle Size	Max Web Speed	Max Web Width
 CyClean™	Airflow Combination	No	Yes	0.5 micron	600 mtr/min	2,000mm
 ShearClean™	Roller Airflow	No	Yes	0.3 micron	600 mtr/min	2,100mm
 VacClean™	Vacuum	Yes	No	1-5 micron	2,000 mtr/min	4,000mm ^A
 TakClean™	Tacky Roller	Yes	No	0.5 micron	250 mtr/min ^B	2,000mm

A – special systems for over 4,000mm web width are available on request.

B – a dynamically balanced upgrade is available on request for up to 500mtr/min.

How CyClean Works

- The web passes through a cloud of ionisation on entry to the CyClean head, which neutralises any static charges.
- The web is then subject to a force of turbulent air created by the blowing and vacuum airflows within the head unit.
- High frequency micro-movements of the web are created by the turbulent air.
- The combination of the high frequency micro-movements and turbulent air shatters the web boundary air layer, releasing the contamination into the vacuum airflows.



- As the web exits the CyClean head, it passes through a second cloud of ionisation to prevent re-contamination of the web.

Features and Benefits

Feature	Benefit
Non contact cleaning	Eliminates risk of surface marking and damage. No interference with web tension or web tracking.
Compact design	Flexible positioning & easy installation.
Integrated static control	Neutralises static charges to optimise cleaning performance and prevent re-contamination.
Unique 'fixed ports' system ^A	The ducting connections to the cleaning head remain stationary, resulting in easier installation.
Air balancing	Allows complete control of the bias between blowing and vacuum airflows.
Auto airflow adjustment	Reduces the frequency of required operator adjustments. Maintains optimum cleaning performance automatically.
Hinged, clam shell design ^A	Allows unit to open for easy threading of the web.
No consumable items	Lower ongoing costs.
Quiet operation	Can be installed in enclosed work areas. No H&S issues due to noise.

A –Standard for systems up to 600mm web width.

Technical Characteristics

Maximum Web Speed (web driven)	600mtrs/min, 1968 ft/min
Maximum Web Width	up to 2000mm, 78"
Duct Connections ^A	Fixed position 6x40mm Ø OD
Static Control (active)	4 x 914 AC bars; 110/240V AC, 50/60Hz
Mounting	4 x M8 x 16mm holes
Standard Opening	Manual hinged for up to 600mm web width. Pneumatic for above 600mm web width.
Optional Opening Upgrade	Systems for web widths of 600mm and below can be upgraded to have pneumatic opening at time of ordering.

A –Standard for systems up to 600mm web width.

Standard CyClean Sizes

The following standard sizes of CyClean head are available. CyClean systems are sized based on web width.

Product Code	Max Web Width	Slot Width (blowing and vacuum slots)	Overall Head Length Excluding Spigots
	mm	mm	mm
ACyClean-0200	200	220	320
ACyClean-0300	300	320	420
ACyClean-0400	400	420	520
ACyClean-0500	500	520	620
ACyClean-0600	600	620	720
ACyClean-0800	800	820	880
ACyClean-1000	1000	1020	1080
ACyClean-1200	1200	1220	1280
ACyClean-1400	1400	1420	1480
ACyClean-1600	1600	1620	1680
ACyClean-1800	1800	1820	1880
ACyClean-2000	2000	2020	2080

Non Standard CyClean Sizes

Meech is able to manufacture CyClean systems of non standard size, i.e. systems that do not match the web widths above.

In these cases a 10% price premium will be charged based on the next higher length system.

For example, if a customer requires a system sized exactly for a 440mm web width (460mm slot width, 560mm overall head length), the price will be calculated as the 500mm web width + 10%.

Standard CyClean Scope of Supply

Depending on the web width the system is specified for, the standard components vary as detailed below.

Product Code	Pneumatic Opening		Qty of 905 Power Units	Qty of Air Handling Units (AHU)	Ducting Kit (allows head to be 5mtrs from AHU)
	Option	Standard			
ACyClean-0200	✓		1	1	Option
ACyClean-0300	✓		1	1	Option
ACyClean-0400	✓		1	1	Option
ACyClean-0500	✓		1	1	Option
ACyClean-0600	✓		1	1	Option
ACyClean-0800		✓	1	1	Option
ACyClean-1000		✓	1	1	Option
ACyClean-1200		✓	2	1	Option
ACyClean-1400		✓	2	2	Option
ACyClean-1600		✓	2	2	Option
ACyClean-1800		✓	2	2	Option
ACyClean-2000		✓	2	2	Option

CyClean Sales Opportunities

We have received interest in CyClean from the following areas:

Coating Lines

Increasingly, Meech have been approached by customers with coating lines who are looking for an advanced system with excellent level of cleaning.

Slitter Rewinders

Interest has been expressed by some companies with slitter rewinders. The small cross section of the CyClean makes installation in this type of application feasible. The added benefit of CyClean is that due to being non-contact, it does not matter what configuration of slit webs (total web width) are passed through the system. With a contact system this could cause problems.

Narrow Web

The CyClean was displayed at the Labelexpo show in Chicago (September 2012). During the show we received interest from companies that would like to move away from installing the default tacky roller web cleaner (TakClean) on their press. The reason for this is that they wish to remove the ongoing consumable cost associated with tacky roller web cleaners.

Companies that were interested in ShearClean

We have spoken with some existing customers who have historically expressed interest in ShearClean, but did not invest due to the cost and complexity of the system.

Pricing Position

The price position of CyClean within the Meech range has been set aggressively.

For all web widths, CyClean has been priced with a slight premium over the VacClean and TakClean contact system prices. This slight premium reflects the CyClean being a non-contact system and the advantages this brings to the user.

How is CyClean priced compared to ShearClean?

This is the question that most will be thinking, as ShearClean is Meech's other non-contact system.

The great news is that CyClean is priced approximately 40-50% lower than ShearClean (length dependent).

Competition

There are 2 competitors that have systems that function in a similar way to CyClean.

These competitors are:

Competitor	Head Office Location	Website
Kelva	Sweden	www.kelva.se
ACE	Italy	www.ace-electrostatic.it

Kelva

Kelva focus activity largely on web cleaning and have a range consisting of 2 technologies. One competes with CyClean and the other with TakClean. Kelva are known for their tacky roller and blow/vacuum cleaners. Kelva systems are good quality and are priced closely to Meech systems.

ACE

ACE focus activity on web cleaning and static control. The ACE web cleaning range consists of 2 technologies. One competes with CyClean and the other with TakClean. The ACE systems are typically low cost and have a quality level that is substantially lower than Meech.

Useful Documents

In addition to this launch overview, please view the following documents:

- Brochure
- Drawing Pack
- Powerpoint Presentation
- Air Handling Unit (AHU) Manual

Availability

CyClean is available now. Systems are initially on a 6 week lead time, which we are working to reduce.



Meech International

2 Network Point
Range Road, Witney
OX29 0YN, UK

Tel: +44 (0)1993 706700
Fax: +44 (0)1993 776977
email: sales@meech.com

Meech Static Eliminators USA Inc

2915 Newpark Drive
Norton, OH 44203
USA

Tel: +1 330 564 2000 / 1 800 232 4210
Fax: +1 330 564 2005
email: info@meech.com

Meech Elektrostatik SA

Kaiserbaracke 66
B-4780 St.Vith
Belgium

Tel: +32 8086 2983
Fax: +32 8086 2821
email: mesa@meech.com

Meech CE

2151 Fót
Széchenyi út. 46
Hungary

Tel: +36 27535075
Fax: +36 27535076
email: ce@meech.com

Meech Static Eliminators (Shanghai) Co. Ltd

7G, 7F, LP Tower
#25 Xiangfeng Road
201103 Shanghai
China

Tel: +86 400 820 0102
Fax: +86 21 6405 7736
email: china@meech.com

Meech Shavotech

Shavo House, Survey No.21A / 10 B, Plot No.394
South Main Road, Koregaon Park, PUNE 411 001
India

Tel: 020-26069641/ 26069642,
Fax: No.020-26069644
e-mail: india@meech.com